



TASSIMO

my way



TAS60xx

de Gebrauchsanleitung
en Instruction manual
fr Mode d'emploi
es Instrucciones de uso
it Istruzioni per l'uso
sv Bruksanvisning
da Brugsanvisning
no Bruksanvisning
el Οδηγίες χρήσης
pl Instrukcja obsługi
cs Návod k použití
sk Návod na použitie
ro Instrucțiuni de utilizare
ru Правила пользования

2



BOSCH



de	Inbetriebnahme	no	Første gangs bruk
en	First time use	el	Θέση σε λειτουργία
fr	La première utilisation	pl	Uruchamianie
es	Puesta en servicio	cs	Uvedení do provozu
it	Messa in funzione	sk	Uvedenie do prevádzky
sv	Idrifttagning	ro	Prima utilizare
da	Ibrugtagning	ru	Ввод в эксплуатацию



de	Getränkzubereitung	no	Tilberedning av drikker
en	Beverage preparation	el	Παρασκευή ροφήματος
fr	Préparation de boissons	pl	Przygotowanie napoju
es	Preparación de bebidas	cs	Příprava nápoju
it	Preparazione delle bevande	sk	Príprava nápojov
sv	Tillredning av drycker	ro	Prepararea băuturilor
da	Tilberedelse af drikke	ru	Приготовление напитков



de	Getränkeanpassung	no	Tilpasning av drikk
en	Drink adjustment	el	Προσαρμογή ροφήματος
fr	Adaptation des boissons	pl	Ustawienia napoju
es	Adaptación de bebidas	cs	Přizpůsobení nápoje
it	Personalizzazione delle bevande	sk	Prispôsobenie nápojov
sv	Dryckes Anpassning	ro	Potrivirea băuturii
da	Tilpasning af drikke	ru	Индивидуальные настройки для напитков



de	Speicherung und Abruf individueller Einstellungen	no	Lagre og åpne individuelle innstillinger
en	Saving and calling up individual settings	el	Αποθήκευση και κλήση εξατομικευμένων ρυθμίσεων
fr	Enregistrement et consultation des réglages individuels	pl	Zapisywanie i aktywacja indywidualnych ustawień
es	Memorización y selección de ajustes individuales	cs	Uložení a vyvolání individuálních nastavení
it	Memorizzazione e richiamo delle impostazioni individuali	sk	Uloženie a načítanie jednotlivých nastavení
sv	Spara och hämta individuella inställningar	ro	Salvarea și accesarea setărilor individuale
da	Gemning og åbning af individuelle indstillinger	ru	Сохранение и вызов индивидуальных установок

calc

de	Entkalken	no	Avkalking
en	Descaling	el	Απασβέστωση
fr	Détartrage	pl	Odkamienianie
es	Descalcificar	cs	Odstranění vodního kamene
it	Decalcificare	sk	Odstránenie vodného kameňa
sv	Avkalkning	ro	Decalcifierea
da	Afkalkning	ru	Удаление накипи

de Reinigen
en Cleaning
fr Nettoyage
es Limpiar
it Pulizia
sv Rengöring
da Rengøring

no Rengjøring
el Καθαρισμός
pl Czyszczenie
cs Čistění
sk Čistenie
ro Curățarea
ru Очистка



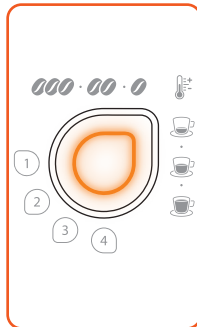
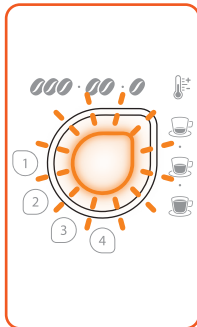
de Stromschlaggefahr!
en Risk of electric shock!
fr Risque de choc électrique!
es ¡Peligro de electrocución!
it Rischio di scossa elettrica!
sv Risk för elektrisk stöt!
da Fare for elektrisk stød!

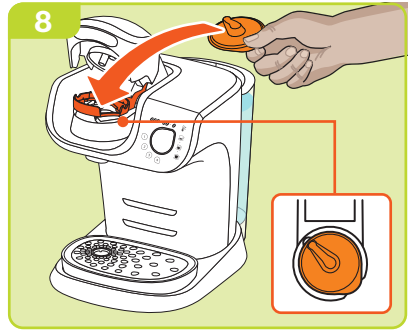
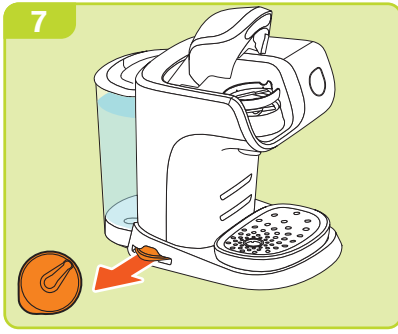
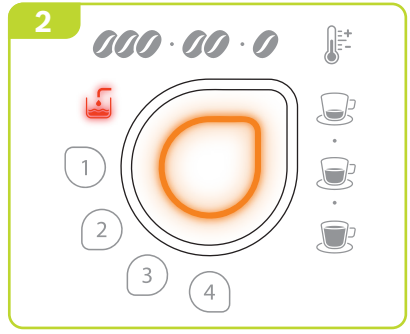
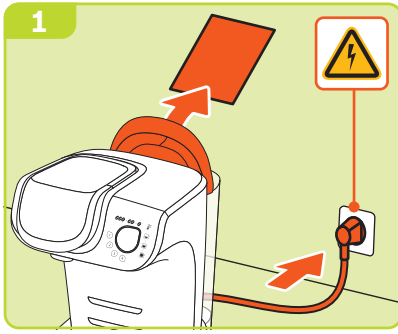
no Fare for elektrisk støt!
el Κίνδυνος ηλεκτροπληξίας!
pl Niebezpieczeństwo porażenia prądem!
cs Nebezpečí úrazu elektrickým proudem!
sk Nebezpečenstvo zasiahnutia elektrickým prúdom!
ro Pericol de electrocutare!
ru Опасность поражения током!

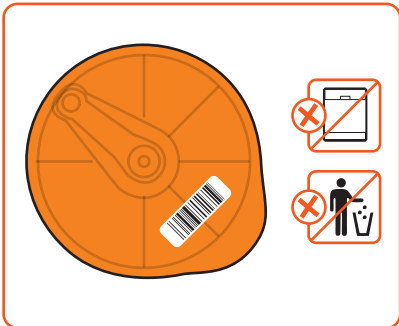
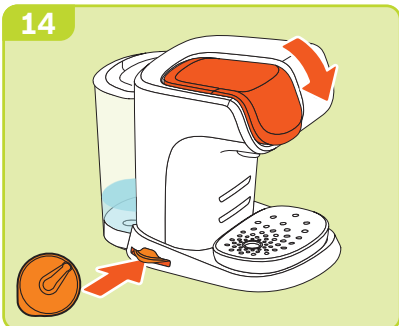
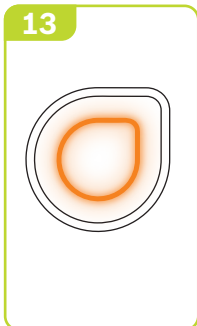
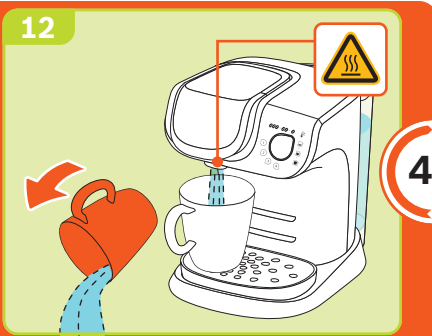
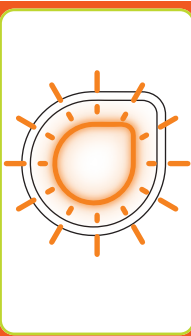
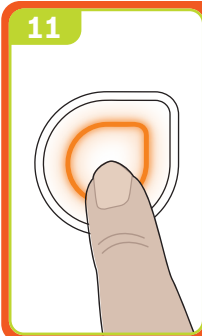
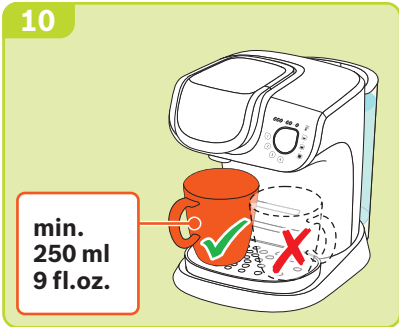
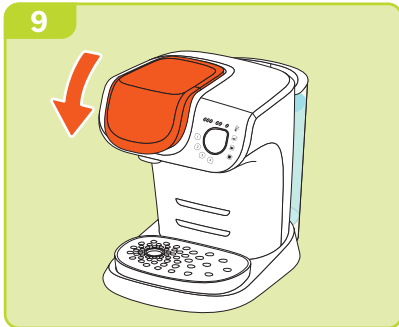


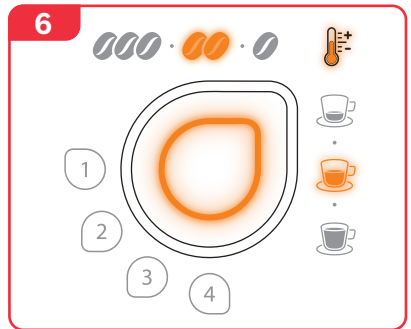
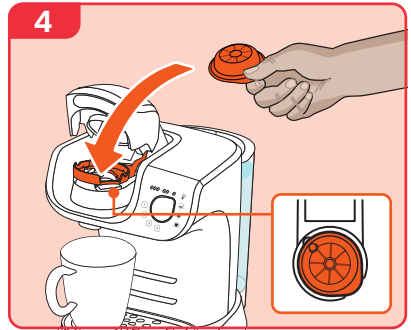
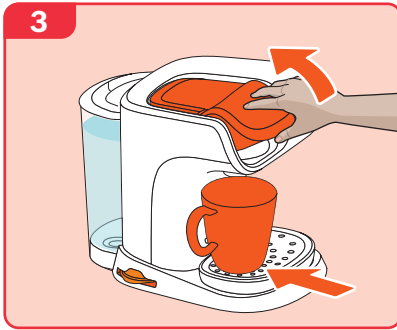
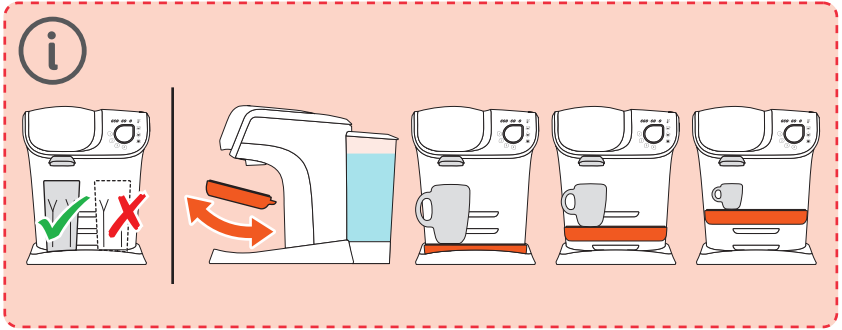
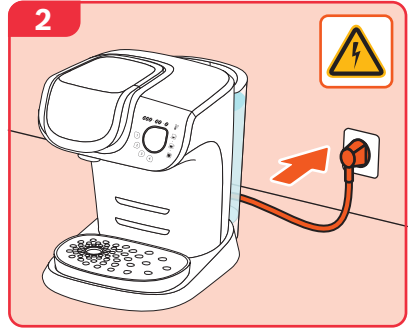
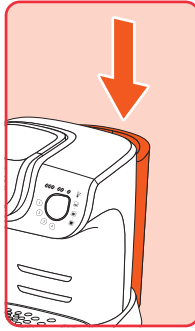
de Verbrennungsgefahr!
en Risk of burns!
fr Risque de brûlure!
es ¡Peligro de quemaduras!
it Pericolo di ustione!
sv Brännskaderisk!
da Fare for forbrænding!

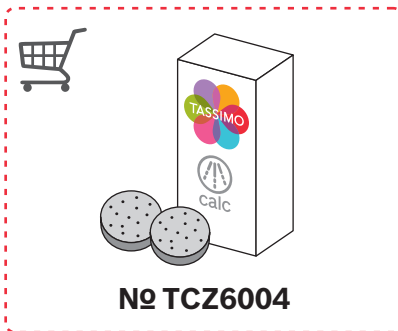
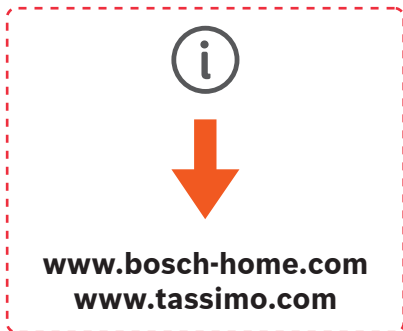
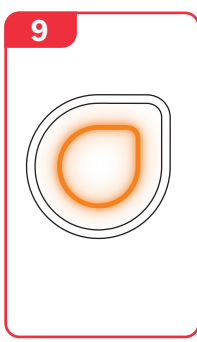
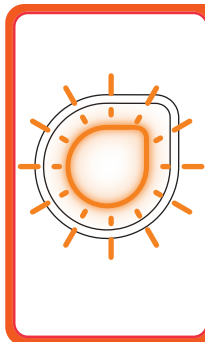
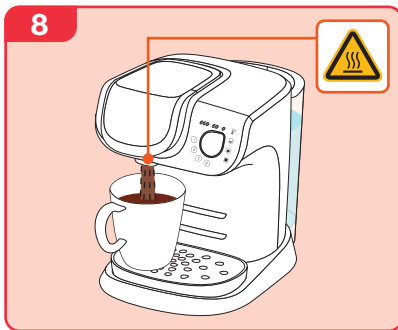
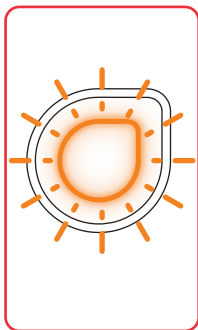
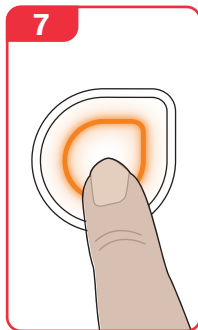
no Fare for forbrenning!
el Κίνδυνος εγκαυμάτων!
pl Niebezpieczeństwo poparzenia!
cs Nebezpečí opaření!
sk Nebezpečenstvo oparenia!
ro Pericol de arsuri!
ru Риск получения ожогов!













de Einstellmöglichkeiten
en Setting options
fr Possibilités de réglage
es Posibilidades de ajuste
it Possibilità di regolazione
sv Inställningsalternativ
da Indstillingsmuligheder
no Innstillingsmuligheter

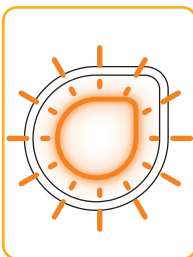
el Δυνατότητες ρύθμισης
pl Możliwości ustawień
cs Možnosti nastavení
sk Možnosti nastavenia
ro Posibilități de setare
ru Возможности
настройки

1

a

b

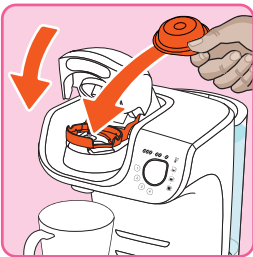
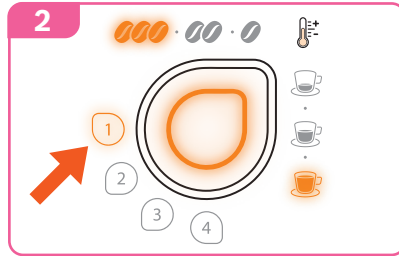
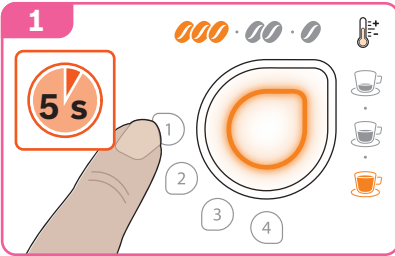
c





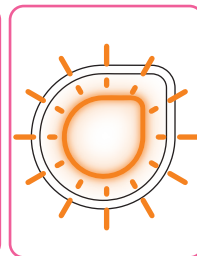
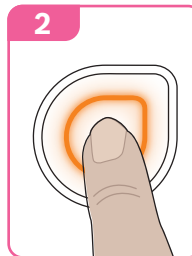
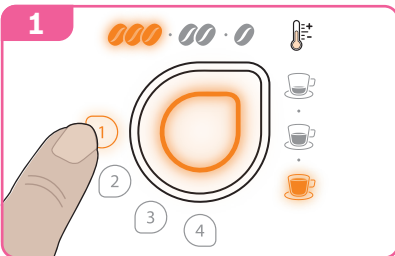
de Einstellung speichern
 en Saving the setting
 fr Mémoriser le réglage
 es Guardar los ajustes
 it Salvataggio impostazioni
 sv Spara inställning
 da Gem indstilling
 no Lagre innstilling

el Αποθήκευση ρύθμισης
 pl Zapisz ustawienie
 cs Uložit nastavení
 sk Uložit' nastavenie
 ro Salvarea setării
 ru Сохранить установку

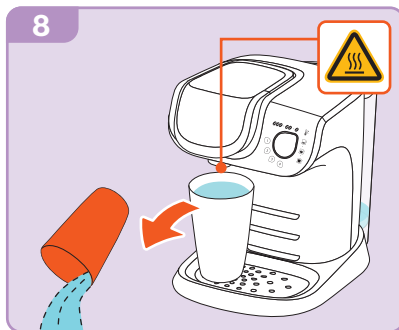
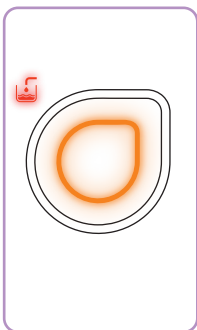
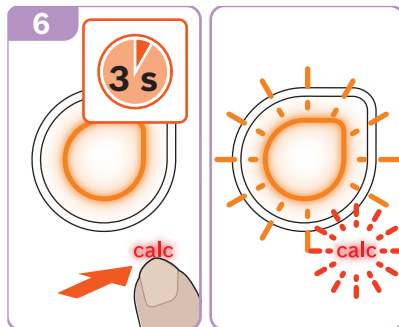
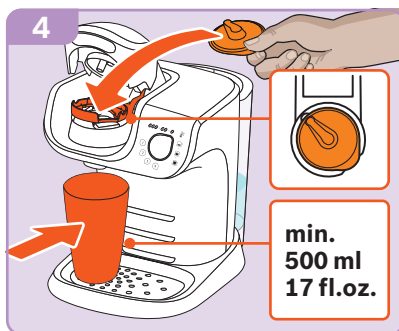
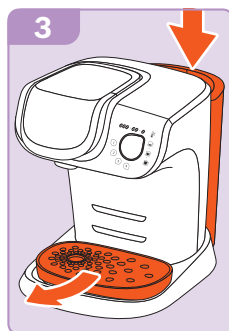
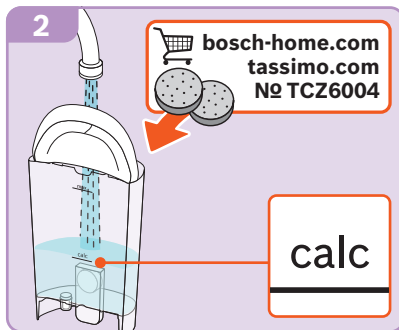
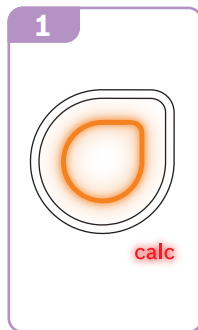


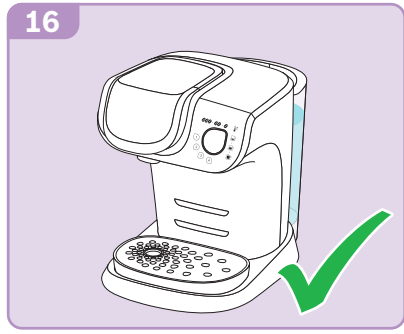
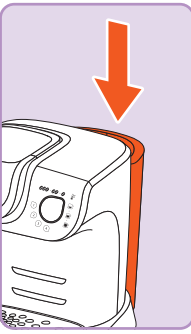
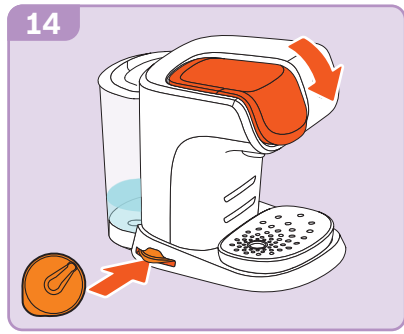
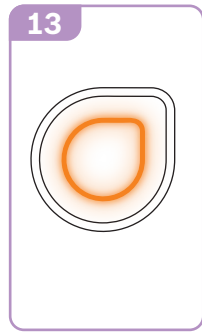
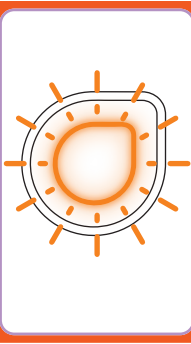
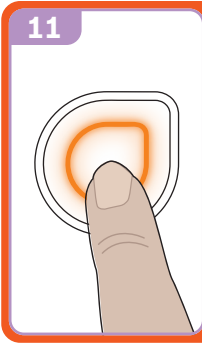
de Einstellung abrufen
 en Recalling the setting
 fr Consulter le réglage
 es Acceder a los ajustes
 it Apertura impostazioni
 sv Hämta inställning
 da Åbn indstilling
 no Gå til innstilling

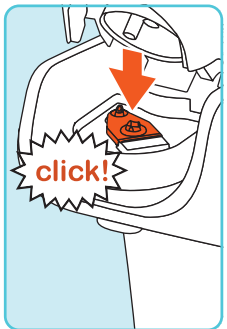
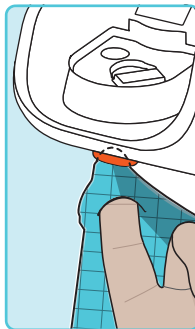
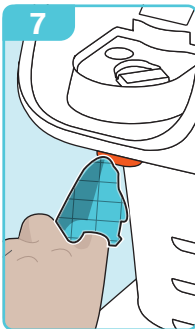
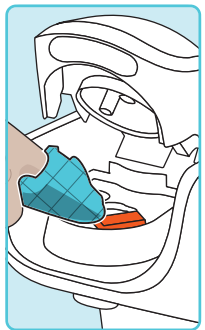
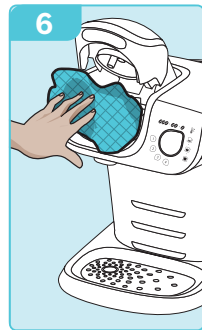
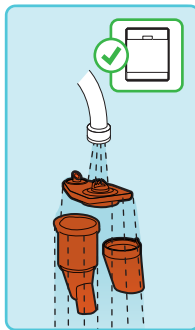
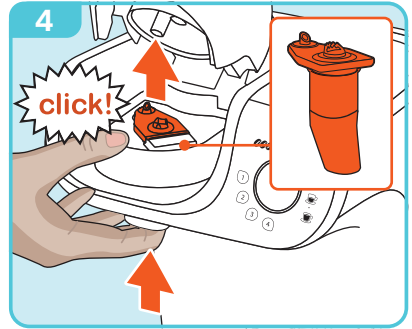
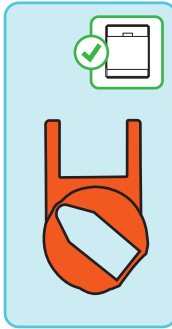
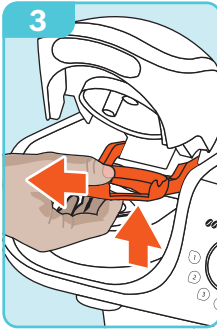
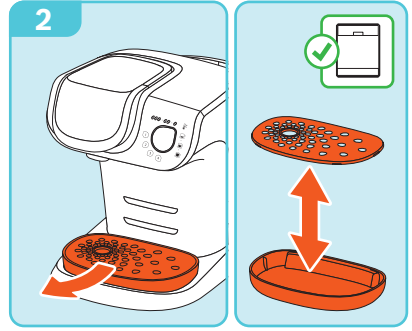
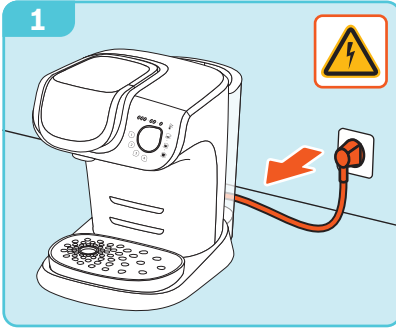
el Κλήση ρύθμισης
 pl Uaktywnij ustawienie
 cs Vyvolat nastavení
 sk Zrušit' nastavenie
 ro Accesarea setării
 ru Вызвать установку

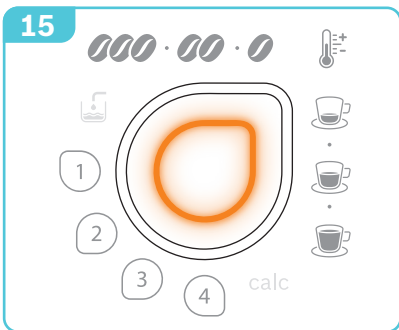
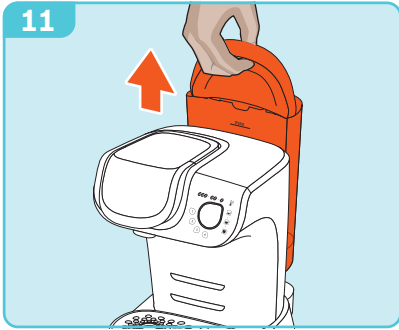
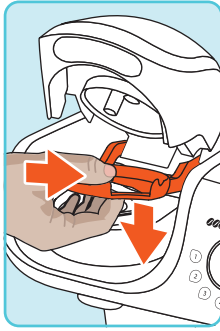
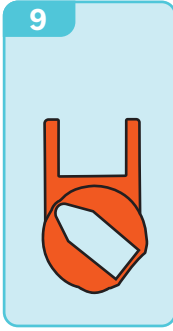


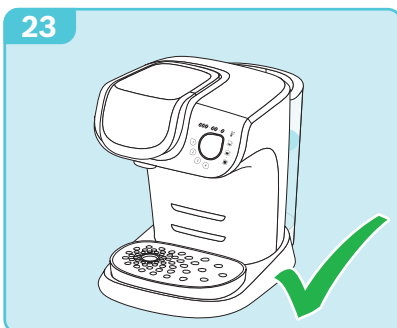
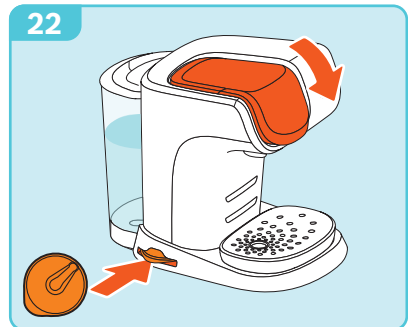
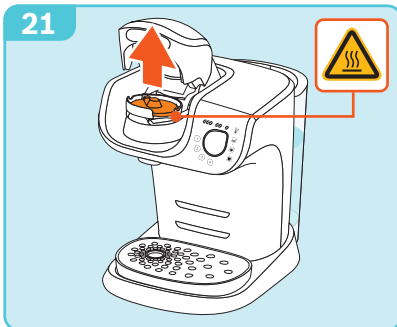
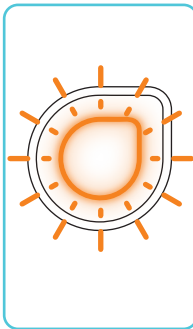
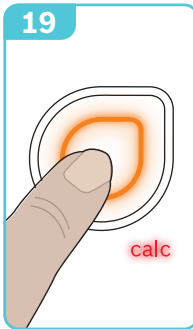
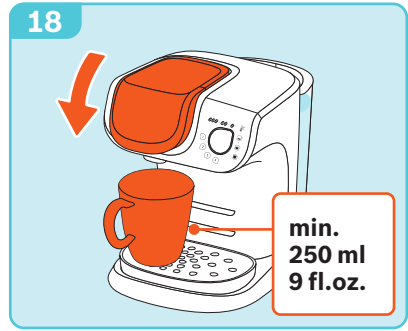
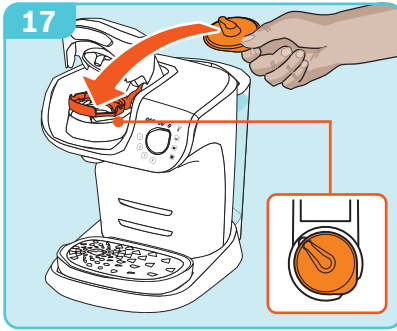
calc













- de** Beachten Sie unbedingt die Sicherheitshinweise in der beiliegenden Gebrauchsanleitung – Teil 1! Dort finden Sie auch detaillierte Informationen zum Gebrauch, Garantiehinweise und Kontaktadressen.
- en** Always follow the safety instructions in the included manual part 1! You will also find detailed information regarding Care and Use, Warranty and Contact information for Customer Service.
- fr** Suivez toujours les consignes de sécurité fournies dans la partie 1 de ce manuel. Vous trouverez également des informations sur l'entretien, l'utilisation, les conditions de garantie et les coordonnées du service client.
- es** Lea atentamente estas instrucciones de uso y la información adjunta antes de utilizar la máquina. También encontrará información detallada referente al uso, garantía y direcciones de contacto.
- it** Seguire sempre le avvertenze di sicurezza nelle istruzioni per l'uso allegate – Parte 1! È inoltre possibile trovare informazioni dettagliate sull'uso, informazioni sulla garanzia e indirizzi di contatto.
- sv** Beakta säkerhetsanvisningarna i del 1 i den bifogade bruksanvisningen. Där hittar du också detaljerade informationer om användningen, garantin och kontaktadresser.
- da** Følg under alle omstændigheder sikkerhedsanvisningerne i den vedlagte brugsanvisning – del 1! Her finder du også detaljer om brug, garantioplysninger og kontaktadresser.
- no** Følg alltid instruksjonene i den vedlagte bruksanvisningen – del 1! Der finner du også detaljert informasjon om bruk, garantivilkår og kontaktadresser.
- el** Προσέξτε οπωσδήποτε τις υποδείξεις ασφαλείας στις συνημμένες οδηγίες χρήσης – μέρος 1! Εκεί θα βρείτε επίσης λεπτομερείς πληροφορίες για τη χρήση, υποδείξεις εγγύησης και διευθύνσεις επικοινωνίας.
- pl** Należy koniecznie przestrzegać instrukcji bezpieczeństwa w dołączonej instrukcji obsługi – część 1! Można znaleźć tam również szczegółowe informacje na temat użytkowania urządzenia, gwarancji oraz adresy kontaktowe.
- cs** Vždy dbejte bezpečnostních pokynů uvedených v přiloženém návodu k použití – část 1! Zde najdete také podrobné informace týkající se použití, záruční podmínky a kontaktní adresy.
- sk** Venujte bezpodmienečne pozornosť bezpečnostným pokynom uvedeným v priloženom návode na použitie – časť 1! Tu nájdete aj podrobné informácie o používaní, záručné podmienky a kontaktné adresy.
- ro** Vă rugăm să respectați obligatoriu instrucțiunile de siguranță prezentate în instrucțiunile de utilizare atașate - partea 1! Acolo găsiți informații detaliate cu privire la utilizare, indicații referitoare la garanție și date de contact.
- ru** Обязательно соблюдайте указания по технике безопасности, которые приведены в части 1 инструкции по эксплуатации! В инструкции Вы найдете подробную информацию об использовании и гарантии, а также контактные данные.

