

APP



Google Play and the Google Play logo are trademarks of Google Inc.



Apple and the Apple logo are trademarks of Apple Inc.

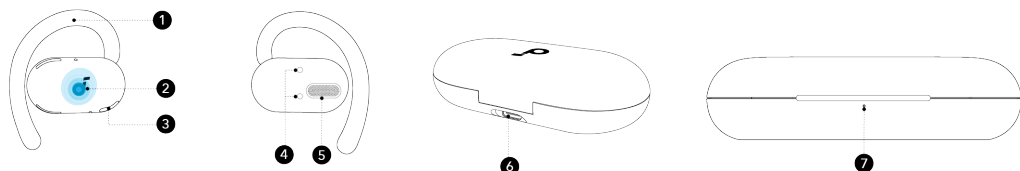


Download the soundcore app to adjust EQ settings, experience Gaming Mode, customize touch controls and light effects, update firmware, and explore more features.

If your earbuds cannot connect with the soundcore app, try re-installing the app or updating it to the latest version available in your mobile app store.

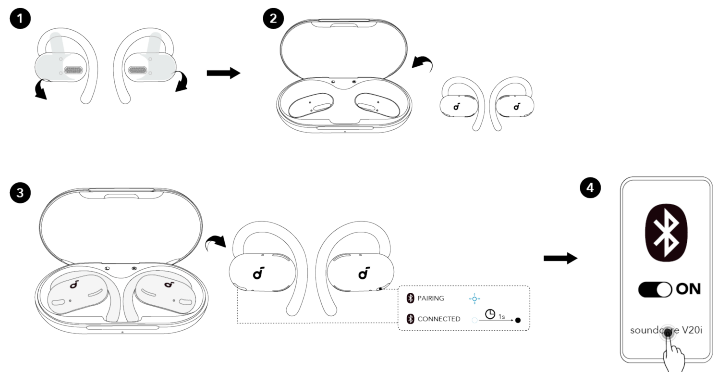
Click this link to download: <http://dl-soundcore.soundcore.com/qcdl?flow=soundcore>

OVERVIEW



1. Adjustable Earhook
2. Touch Area
3. Customizable LED Light
4. Charging Contactors
5. Sound Outlet
6. USB-C Charging Port
7. Charging Case Indicator

POWERING ON & PAIRING



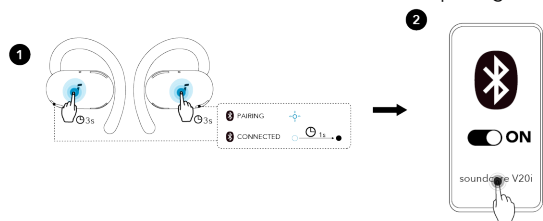
1. For first-time use, remove the insulation stickers on the earbuds.
2. Return earbuds to the charging case.
3. Take out the earbuds again. The earbuds will automatically power on and enter Bluetooth pairing mode. Select "**soundcore V20i**" on your device's Bluetooth list to connect. During pairing, the LED lights on both earbuds will flash blue. Once the pairing is successful, the LED lights on both earbuds will stay on for 1 second and then go off.

Once connected, the earbuds will automatically reconnect to your device every time you open the charging case and take out the earbuds, as long as you haven't deleted the pairing history from your device.

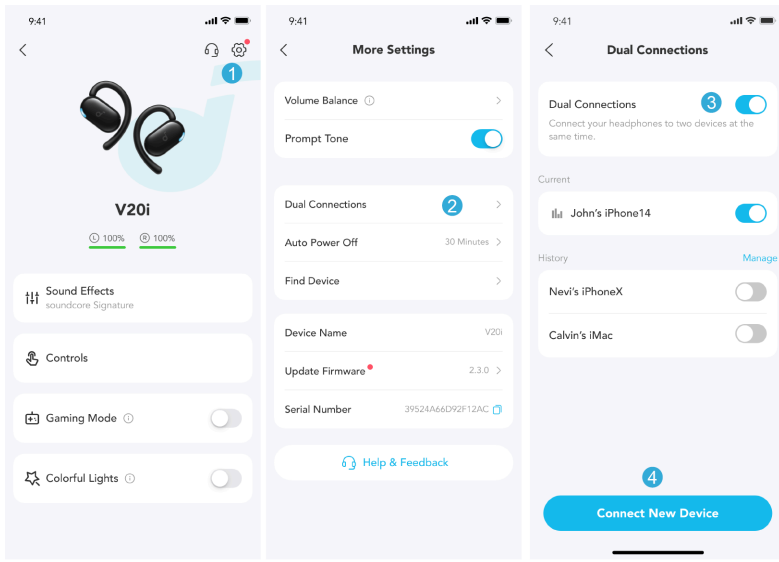
***Earbuds will only power on when taken out of the case.**

MANUAL PAIRING

To manually enter Bluetooth pairing mode, take out both earbuds from the charging case, then tap and hold the touch areas of both earbuds simultaneously for 3 seconds. At this time, the earbuds will enter pairing mode.



DUAL CONNECTIONS



Method 1: Using the soundcore App

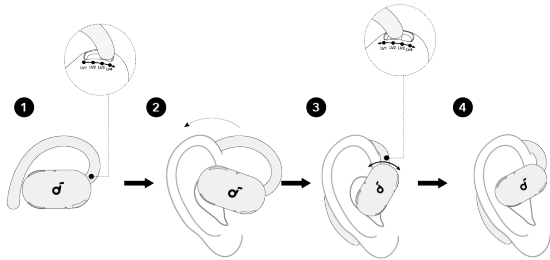
In the soundcore app, tap on the Settings icon located at the upper right corner of the app's interface. Then select **Dual Connections > Enable Dual Connections > Connect New Device**.

Method 2: Manual Pairing with the Second Device

While wearing the earbuds, press and hold the touch control area on both earbuds for 3 seconds until you hear a voice prompt of entering pairing mode. Then you can proceed to pair with the second device.

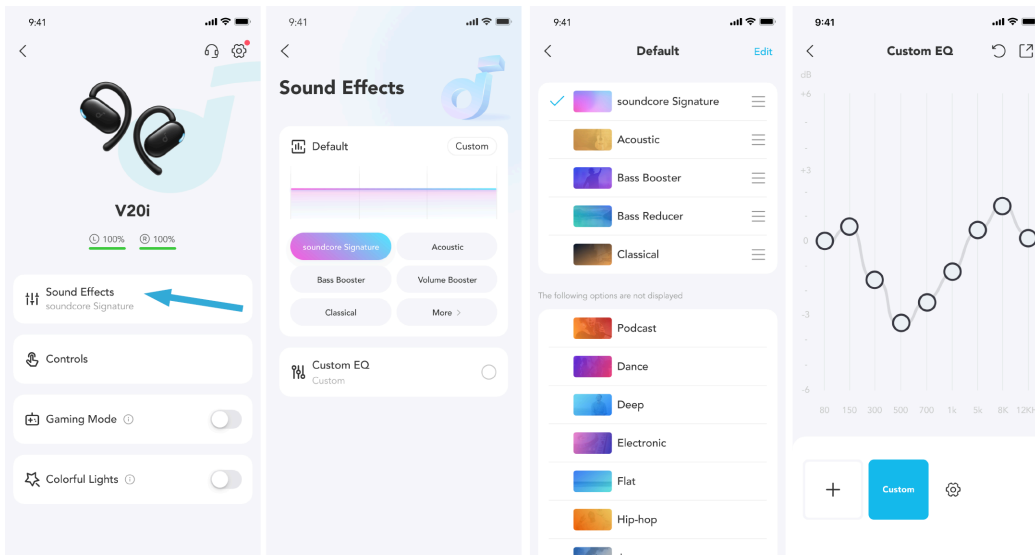
* Dual Connections feature is enabled by default.

WEARING



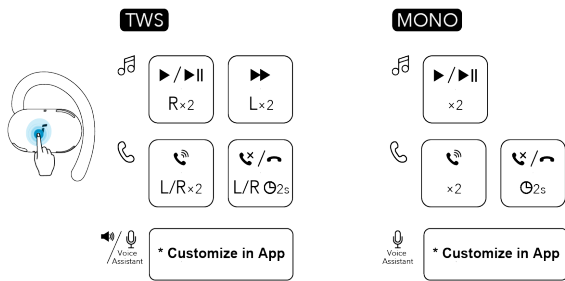
1. Pick up the earbuds and slide the earhook all the way right to the LV4 position (the largest curve).
2. Rotate the earhooks along the auricle of your ear to achieve proper positioning.
3. When you have put on the earbuds, you can slide the earhooks back and forth among four levels until you find the most comfortable fit.

SOUND EFFECTS



In the soundcore app, the default sound effect is "soundcore Signature", a special preset recommended by the soundcore team. We offer 22 EQ presets for different scenarios. You can switch between these presets based on your preferences. Additionally, you can create your own sound profile by adjusting eight sliders on the "Custom Equalizer" page.

TOUCH CONTROLS

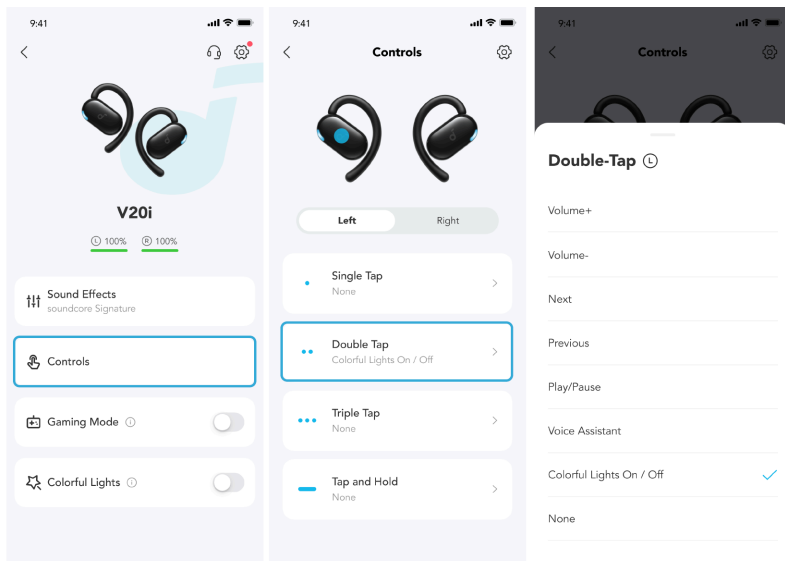


×2: Tap twice 2s: Tap and hold for 2 seconds
 *You can also customize controls in the soundcore app.

		TWS mode	Mono mode
🎵	Play / Pause	Double tap (R)	Double tap
	Previous track	*Customize in soundcore app	/
	Next track	Double tap (L)	
☎️	Answer	Double tap (L/R)	Double tap
	Reject a call/ End a call	Tap and hold for 2 seconds (L/R)	Tap and hold for 2 seconds
🔊	Volume up	*Customize in soundcore app	*Customize in soundcore app
	Volume down		
🗣️	Activate voice assistant	*Customize in soundcore app	*Customize in soundcore app

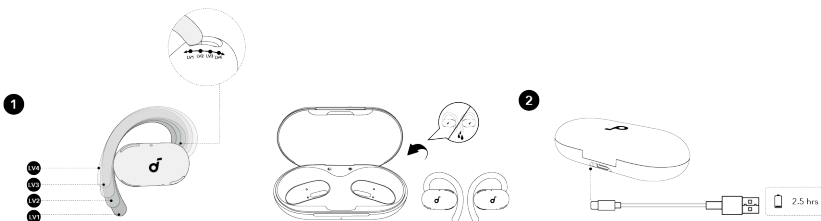
Customize Touch Controls on soundcore App

*Current UI images are for illustrative purposes only. The actual display contents may vary based on different software versions.



Tap **Controls** in the home page, you'll be able to personalize the following actions for touch controls on either the left or right earbud: **Raise/lower volume, switch songs, play/pause music, wake up the Voice Assistant, and turn on/off the Colorful Lights.**

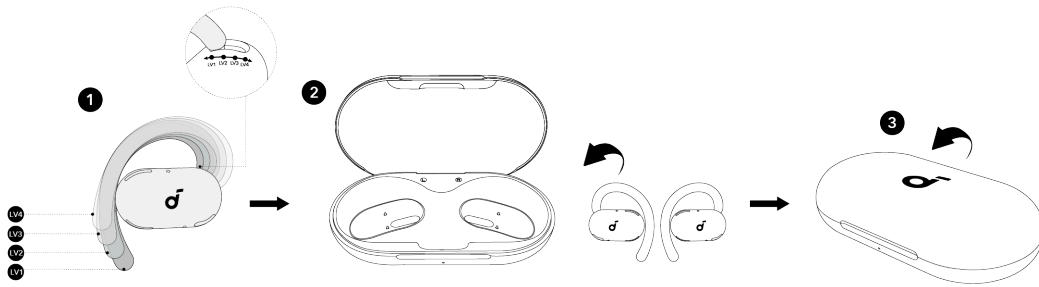
CHARGING



1. Restore the earhooks to LV1 positions, then place the earbuds in the charging case and close it.
 • Fully dry off the earbuds and the USB-C charging port before charging.
2. Connect the charging case to a power supply by using the provided USB-C charging cable.

* A full battery recharge of the charging case takes about 2.5 hours.

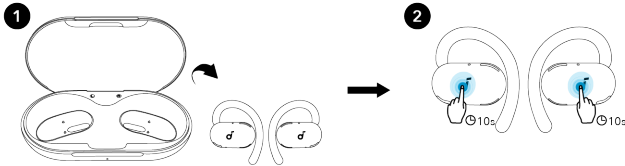
POWERING OFF



To power off, return both earbuds to the charging case. Please note that you need to restore the earhooks of both earbuds to LV1 positions so that they can fit into the charging case.

* The earbuds will automatically power off after 30 minutes if they are not connected. The duration can be customized in the soundcore app.

RESET

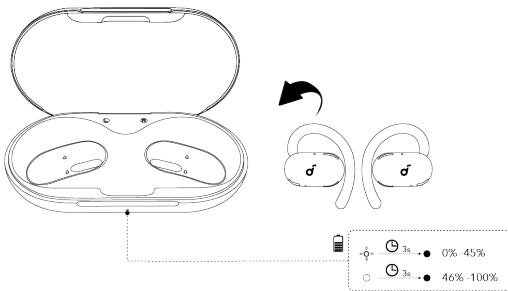


Reset if the earbuds have issues pairing with each other or with other devices.

Take out the earbuds from the charging case, then tap and hold the touch areas of both earbuds simultaneously for 10 seconds until you hear a voice prompt. At this time, your earbuds have been successfully reset.

LED LIGHT GUIDE

To Check the Battery Level:

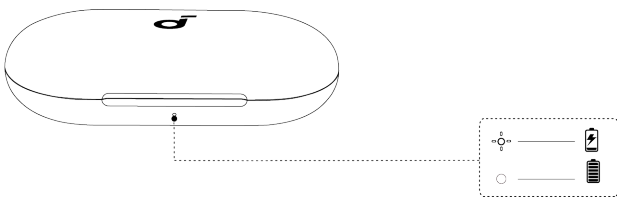


When you return the earbuds into the charging case, the charging case indicator will show you the remaining battery of the case:

When the battery level ranges from 0% to 45%, the indicator will flash three times and then go off.

When the battery level ranges from 46% to 100%, the indicator will stay on for three seconds and then go off.

When Charging:



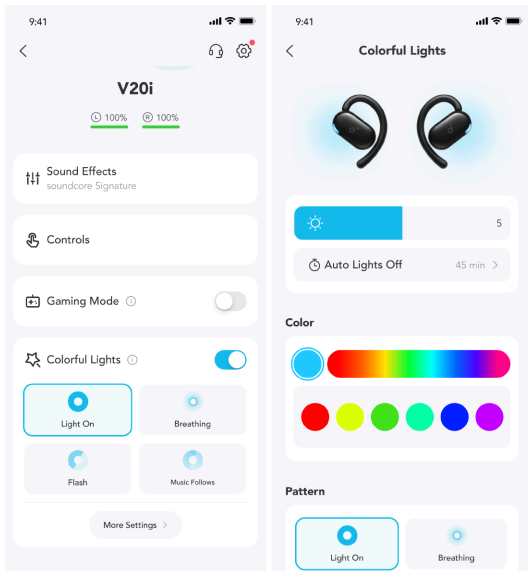
When charging, the charging case indicator will keep flashing. When the charging is complete, the indicator will stay on all the time.

COLORFUL LIGHTS ON THE EARBUDS

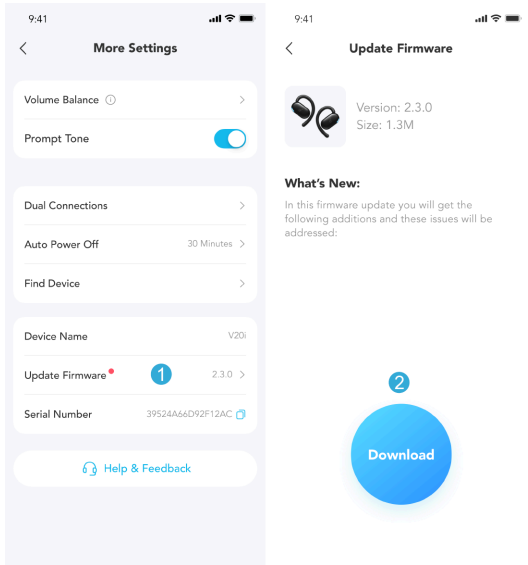
*Current UI images are for illustrative purposes only. The actual display contents may vary based on different software versions.

The colorful light effects on both earbuds need to be enabled via the soundcore app.

You get to choose from four light effects: **Light On, Breathing, Flash, Music Follows**. Tap **More Settings** to customize the illumination, duration, colors and patterns.



FIRMWARE UPDATE



You will be informed once a new firmware version is detected when you connect the earbuds to the app. Ensure the earbuds are outside the charging case until the firmware update is complete. During the update, avoid any usage.

SPECS

Specifications are subject to change without notice.

Input	5V \pm 0.52A
Output	5V \pm 0.12A
Battery capacity	700mAh
Charging time	Earbuds: 1.5 hours Charging case: 2.5 hours
Driver unit	16mm
Frequency response	20~20kHz
Impedance	16 Ω
Waterproof rating (earbuds)	IP55
Bluetooth version	Bluetooth 5.4
Bluetooth range	10m

CUSTOMER SERVICE & COMPLIANCE INFORMATION



service@soundcore.com
support.me@soundcore.com (For Middle East and Africa Only)
support@anker.com (日本)



+1 (800) 988 7973 (US/Canada)
+44 (0) 1604 936200 (UK)
+49 (0) 69 9579 7960 (DE)
03 4455 7823 (日本)
+86 400 0550 036 (中国)
+82 02-1661-9246 (한국)
+971 529750842 (Middle East & Africa)
+971 8000320817 (UAE)
+966 8008500030 (KSA)
+965 22069086 (Kuwait)
+20 8000000826 (Egypt)
+61 3 8331 4800 (Australia)
+90 (850) 460 14 14 (Türkiye)

+8 (800) 511-86-23 (Russia)
+91 18003138831 (India)

Note: The 'x' of SN Code: xxxxxxxxxxxxxx is a variable, see below table.

Variable 'x'	Range of variable	Content
Eighth	8,9,A,B,C...	Denotes the year, 8 means 2018, 9 means 2019, A means 2020, B means 2021, C means 2022, and so on.
Ninth and tenth	01,02,03...	Denotes weeks, 01 means the first week in this year, 02 means the secondary week in this year, and so on.
Eleventh	1-7	Denotes date, 1 means Monday, 2 means Tuesday..., 7 means Sunday and so on.
The last five	00001-99999	Denotes serial No.

Hereby, Anker Innovations Limited declares that this device is in compliance with The Product Security and Telecommunications Infrastructure (Security Requirements for Relevant Connectable Products) Regulations 2023. For the Statement of Compliance, visit the website: <https://uk.soundcore.com/pages/psti-related>.